



AGM TECHNOLOGY
ABT Etrek DM Series

Complying standards:
IEC 61982. 3 2001
IEC 61056. 1/2 2002

3-DM-260

6V260Ah(5hr,68 °F20°C)

3-DM-260 is a Deep Cycle battery with the capability of high output power, especially for EV use. As with all ABT batteries, all are rechargeable, highly efficient, leak proof and maintenance free.



ISO14001



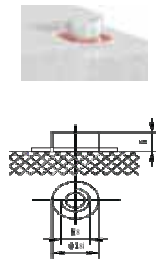
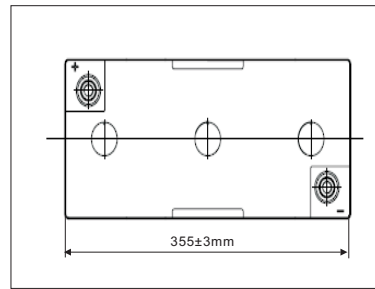
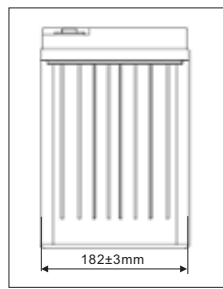
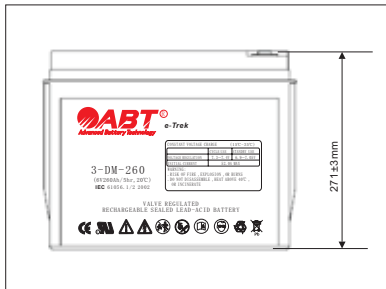
ISO9001



Specification

Cells Per Unit	3
Voltage Per Unit	6
Capacity	260Ah @5hr-rate to 1.75V Per cell @20°C(68°F)
Weight	Approx. 46.5kg(102.5lbs)
Maximum Discharge Current (5s)	68°F(20°C) 1300A
Internal Resistance	Approx. 1.3 mΩ
Operating Temperature Range	Discharge -20~45°C; Charge 5~35°C; Storage 0~40°C
Nominal Operating Temperature Range	20°C±3°C(68°F±5°F)
Float Charging Voltage	6.9 to 7.05 VDC/unit Average at 20°C(68°F)
Recommended Maximum Charging Current Limit	52A
Equalization and Cycle Service	7.3 to 7.4 VDC/unit Average at 20°C(68°F)
Self Discharge	ABT batteries can be stored for more than 6 months at 20°C(68°F). Please charge batteries before using. For higher temperatures the time interval will be shorter.
Terminal	Φ18×M8
Container Material	ABS(IEC707 V0) Flammability resistance of IEC707 V0 can be available upon request.

Dimensions / Terminal



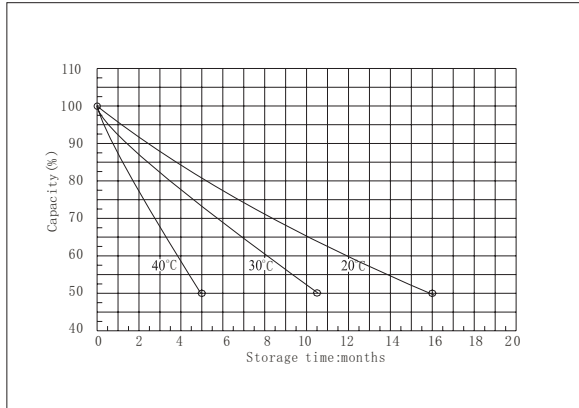
Constant Current Discharge Data (Amperes at 20°C / 68°F)

End voltage (V/cell)	Discharge time (minute)										
	10	20	30	45	60	90	120	180	300	600	1200
1.6	786.2	448.4	328.2	267.6	206.9	144.2	112.2	77.4	52.4	27.2	14.4
1.65	743.5	441.4	325.3	266.5	206.1	143.9	112	77.1	52.3	27.1	14.3
1.7	718.1	438.3	324.1	265.5	205.3	143.5	111.6	77	52.2	27	14.1
1.75	702	429	318.8	261.7	203.3	142.1	110.8	76.7	52	26.9	14

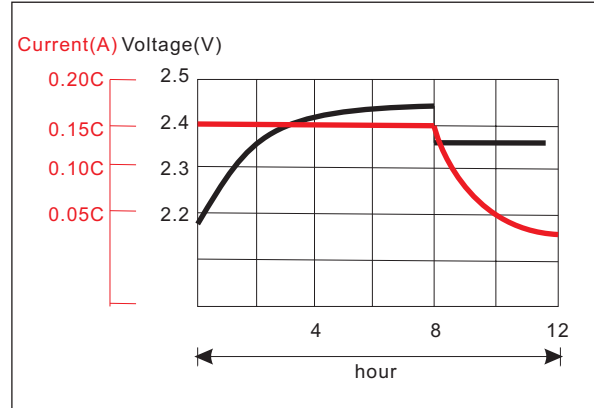
Constant Power Discharge Data (Watts per cell at 20°C / 68°F)

End voltage (V/cell)	Discharge time (minute)										
	10	20	30	45	60	90	120	180	300	600	1200
1.6	1463	853.5	635	519.2	404.1	284.3	223.5	155.4	105.8	55.3	28.9
1.65	1387	842.3	631.1	516.3	403.5	283.7	223.3	155.2	105.4	55.2	28.9
1.7	1344	838.6	630.4	514.7	403.1	283.1	223.1	155	105.2	55.1	28.8
1.75	1316	822.3	621.6	511.7	399.9	281.9	222	154.6	105	55	28.7

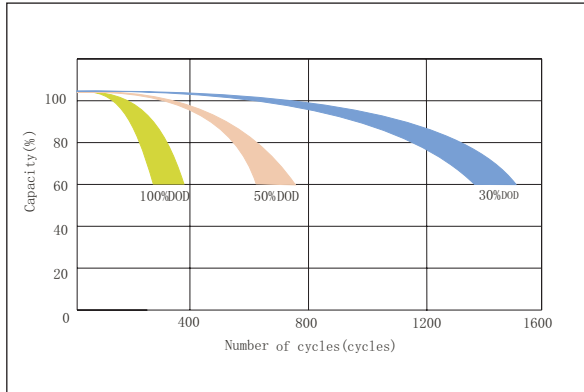
Capacity Retention Characteristic



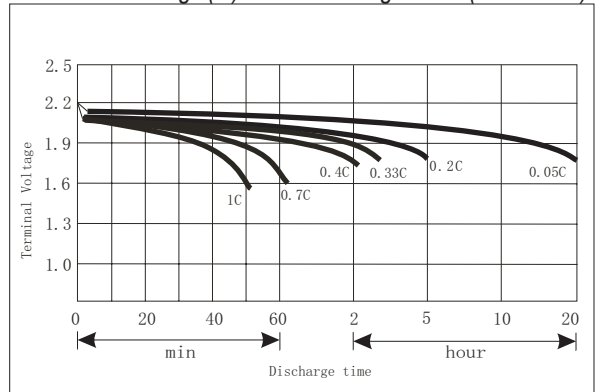
Battery Voltage and Charge Time for Cycle Use



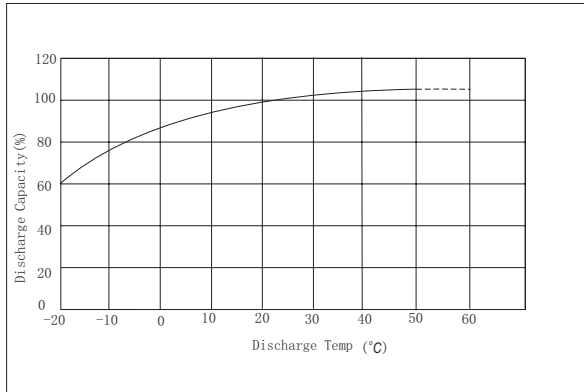
Cycle Service Life



Terminal Voltage (V) and Discharge Time (20°C/68°F)



Discharge Capacity Vs Temperature



Applications

- House car
- Trolley
- Golf car
- Electric vehicle
- Electric machine

Charging Procedures

Application	Charge Voltage(V/Cell)			Max. Charge Current
	Temperature	Set Point	Allowable Ranges	
Cycle Use	20°C(68°F)	2.45	2.40~2.50	0.15C
Standby	20°C(68°F)	2.33	2.30~2.35	0.2C

Discharge Current VS. Discharge Voltage

Final Discharge Voltage V/Cell	1.75	1.60	1.40
Discharge Current(A)	0.4C ≥ (A)	0.4C < (A) ≤ 1.0C	(A) ≥ 1.5C

Contact information

SHANDONG SACRED SUN POWER SOURCES CO.,LTD.
Add: 1, Shengyang Road, Qufu 273100 Shandong, China
Tel: +86-537-4438 666 extn 6027 Fax: +86-537-4411 936
Website: <http://www.abtbatt.com> Email: sales@abtbatt.com

ABT VRLA Battery: Available Power Range From 0.8Ah to 3000Ah

Copyright SACREDSUN™,
All rights reserved.
(Edition: Dec, 2010)