

GFMJ-800
2V800Ah(10hr)

Complying standards:

IEC60896-21/22: 2004

DIN43539-T5

IEC61427-2005

YD/T1360-2005

GB/T 22473-2008



ABT-GFMJ is valve regulated batteries with Positive Flat Plates, incorporate imported key raw material and utilize the imported crucial gel-specialized manufacture equipments for production. Extra gel electrolyte design, plate thickened technology and patent gel electrolyte compounding and filling technique guarantee battery long service life and super high reliability. They are widely used in telecommunication, power supply system, energy storage, UPS and EPS system, etc.

Mechanical Characteristics

	SI Unit	EN Unit
Length	410mm	16.14inch
Width	175mm	6.89inch
Height	334mm	13.15inch
Total Height	344mm	13.54inch
Approx.Weight	60kg	132.3lbs

Type of material for container and lids:

ABS Standard (FV0 Optional)

Product Characteristics

- 15 years life expectancy in float service at 68°F (20°C), 25% DOD (end voltage 1.8V/cell) cycle 3500 times.
- Due our intensive research on corrosion effect, we improve the technology of grid alloy, lead plaste formula additive ,high temperature high humidity solidify and so on, increasing the content of 4PbO·PbSO4·H2O. , improving the binding ability of active substance and grid, reventing early capacity loss due to barrier layer between active substance and grid.
- Fumed Silica used for Gel electrolyte ensuring even distribution inside battery and no acid stratification.
- Extra electrolyte acid filling system which ensure quantity of gel electrolyte is correctly filled over the plates and separators.
- PVC-SiO2 micro-porous separator ensures low internal resistance, high porosity, intense absorption of gel electrolyte and long cyclic life.
- Low self-discharge rate, average month rate ≤2%;
- Gel electrolyte with high purity; storage at ambient temperature 20°C for two years, the rest capacity remains more than 50%.
- Thicken ABS container and cover with high-impact resistant, vibration resistant, prevents leakage and container deformation.

Performance Characteristics

- Rated voltage: 2V
- Rated capacity at 68°F (20°C)
 - 10h rate (80A, 1.80V) 800Ah
 - 5h rate (140A, 1.80V) 700Ah
 - 1h rate (448A, 1.80V) 448Ah
- Internal resistance:
 - 0.28mΩ when fully charged at 68°F (20°C)
- Average self discharge rate:
 - ≤2% per month 68°F (20°C)
- Maximum discharge current:
 - 4417A(3s) at 68°F (20°C)
- Working temperature range:
 - Discharge: -20~55°C
 - Charge: -10~55°C
 - Storage: -20~55°C
- Charging method:
 - with constant voltage at 68°F (20°C)
 - Maximum charge current: 160A
 - Temperature compensation: -3.5mV/°C/piece
 - Cycle use: 2.33-2.37V/ piece
 - Standby use: 2.23-2.27V/ piece



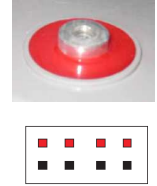
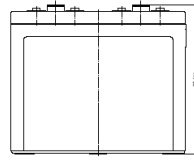
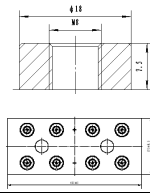
Advanced Battery Technology

GFMJ Series

GFMJ-800

2V800Ah(10hr)

Dimensions/Terminal



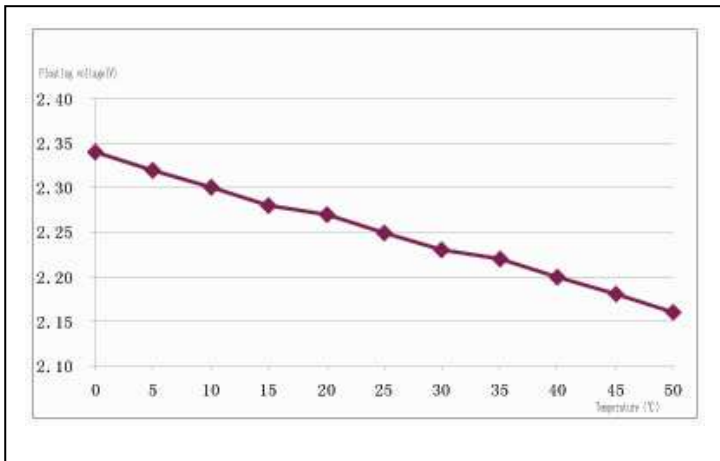
Constant Current Discharge Data (Ampere at 20°C/68 °F)

End Volt	5min	10min	15min	20min	30min	1h	2h	3h	5h	6h	8h	10h	20h	24h	48h	100h	120h	240h
1.65	1360	1240	1152	1040	808	500	300	220	152	136	106.4	90	45.2	36.96	19.44	10	8.72	4.64
1.70	1280	1180	1040	908	760	492	294.8	217.6	148.4	128.8	103.2	85.2	44.4	36.96	19.44	10	8.72	4.64
1.75	1200	1116	992	876	736	484	289.2	214.4	145.6	126.8	101.2	83.6	44	36.96	19.44	10	8.72	4.64
1.80	1120	1060	916	808	680	448	277.6	204.8	140	122	97.2	80	43.2	36.96	19.44	10	8.72	4.64
1.85	960	916	836	756	636	432	261.2	192	131.6	114.4	91.2	75.6	40.8	35.2	19.44	10	8.72	4.64

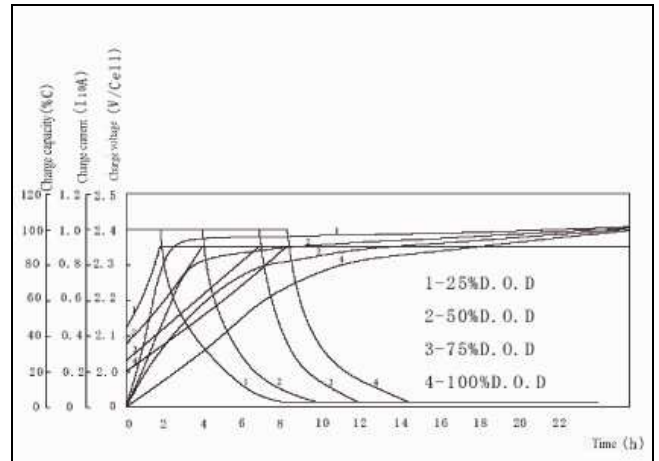
Constant Power Discharge Data (Watts per cell at 20°C/68 °F)

End Volt	5min	10min	15min	20min	30min	1h	2h	3h	5h	6h	8h	10h	20h	24h	48h	100h	120h	240h
1.65	2376	2204	2072	1884	1476	928	560	416	288	200	160	132	73.2	67.6	38.88	20	17.6	9.36
1.70	2276	2136	1900	1672	1404	920	556	416	284	194	154	128	73.2	66.8	38.88	20	17.6	9.36
1.75	2188	2060	1848	1640	1384	916	552	412	280	188	149	123	73.2	66	38.88	20	17.6	9.36
1.80	2092	1992	1736	1532	1300	856	540	396	272	181	143	120	73.2	64.4	38.88	20	17.6	9.36
1.85	1832	1756	1608	1464	1236	844	512	376	260	172	136	113	70.4	61.2	38.88	20	17.6	9.36

Floating Charge Voltage Vs Temperature



Cycle charge characteristic curve (at 20°C/68 °F)



Contact information

Shandong Sacred Sun Power Sources Co.,Ltd
 Add.1, Shengyang Road, Qufu 273100 Shandong, China
 Tel:+86-537-4438666 extn 6028 Fax: +86-537-4411936
 Web: <http://www.abtbatt.com> Email: sales@abtbatt.com

ABT VRLA Battery: Available power range from 7Ah to 3000Ah.

Copy right SACRED SUN,

all rights reserved.

(Edition: May, 2011)