

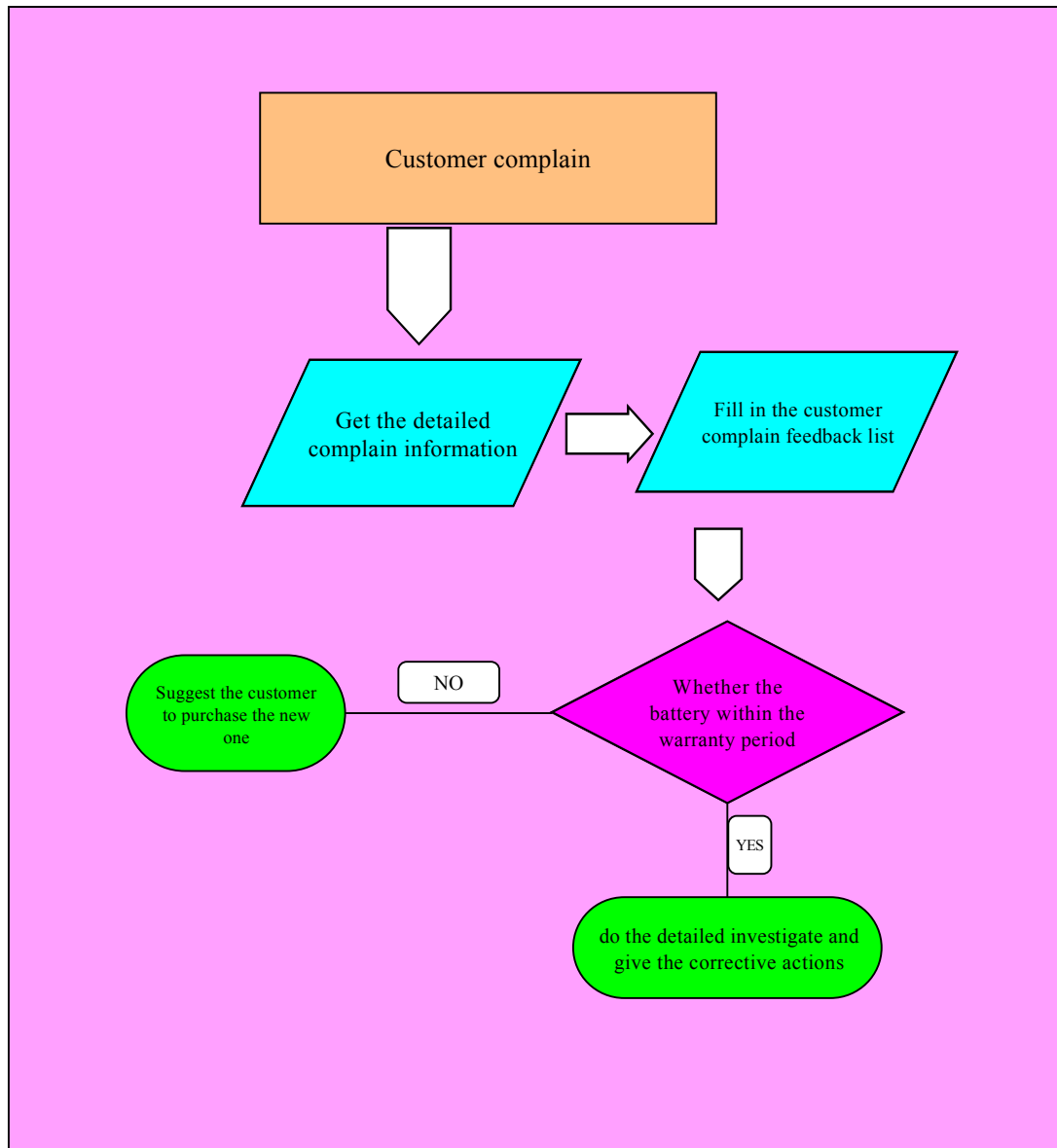
Batteries failure disposal procedure

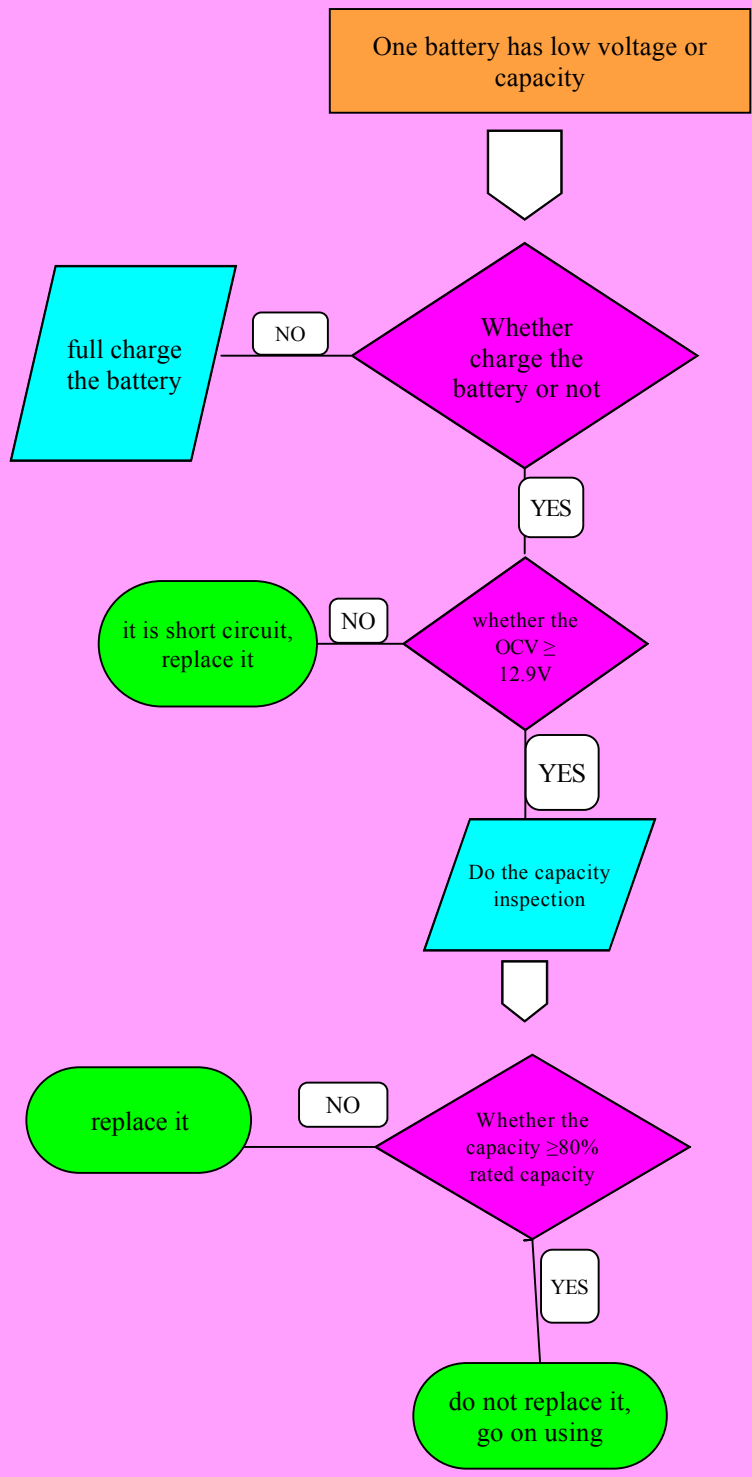
According to the statistic of customer service , the usual battery failure are low capacity /volt, leak acid, appearance and packing and so on. We all have the special procedure to dispose these failues, therefore we can respond the complain quickly and solve it in a short time.

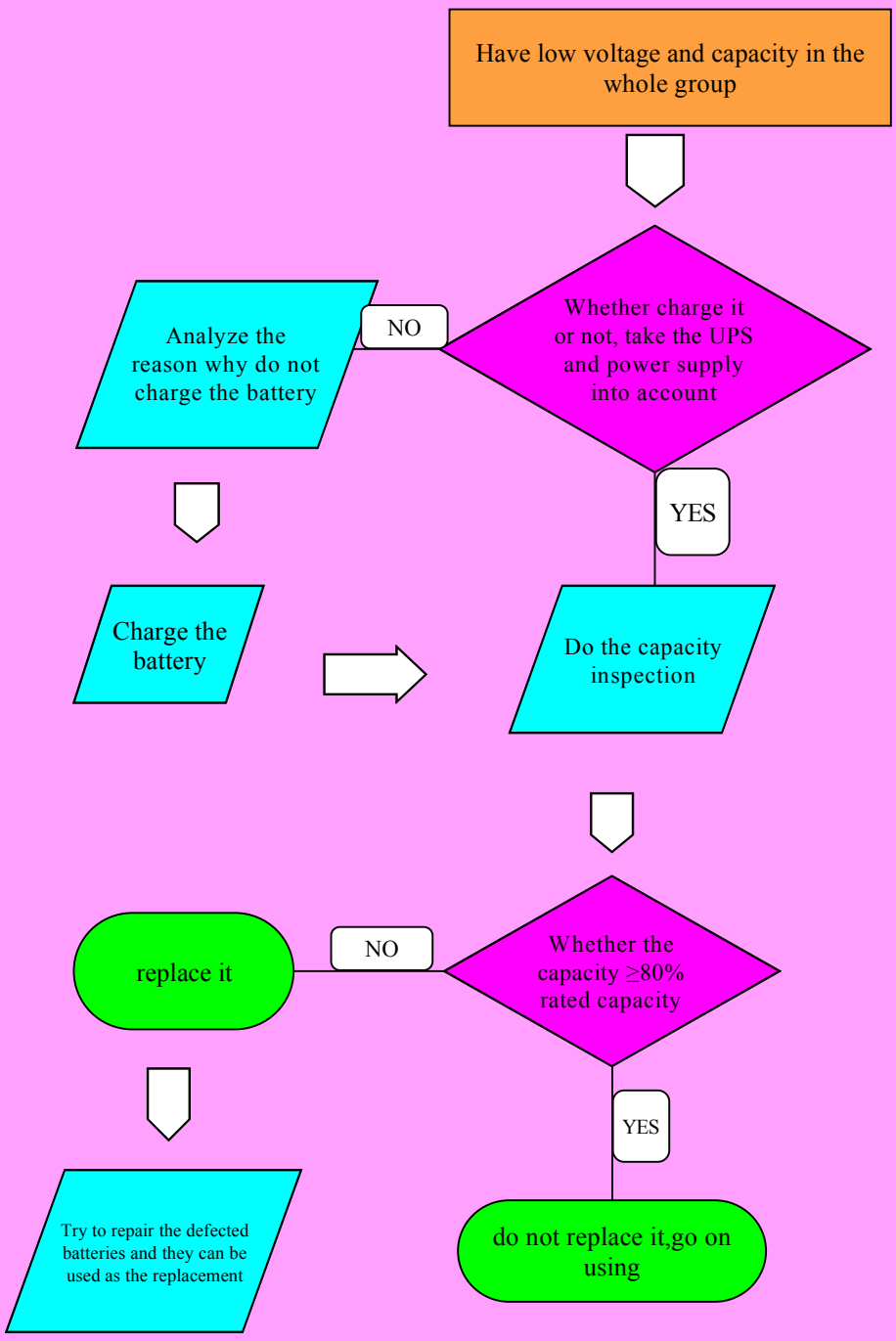
If there is a failure on batteries, firstly find out this matter meet which type of failure, then perform the relevant procedure under this manual; for the exception ,please contact with our service department .

Tel:86-537-4438666-6022

E-mail:xuhui@sacredsun.cn







The method of repairing the battery:

1. charge the battery with 0.15C current and constant voltage 14.7V/15V for 20 hours
2. deep discharge the battery with the constant current 0.17C/0.1C till 6V/pc
3. charge the battery use the same method with step 1
4. capacity inspection at 20 hours discharge rate
5. the battery which capacity is above 80% rated capacity can be accepted

